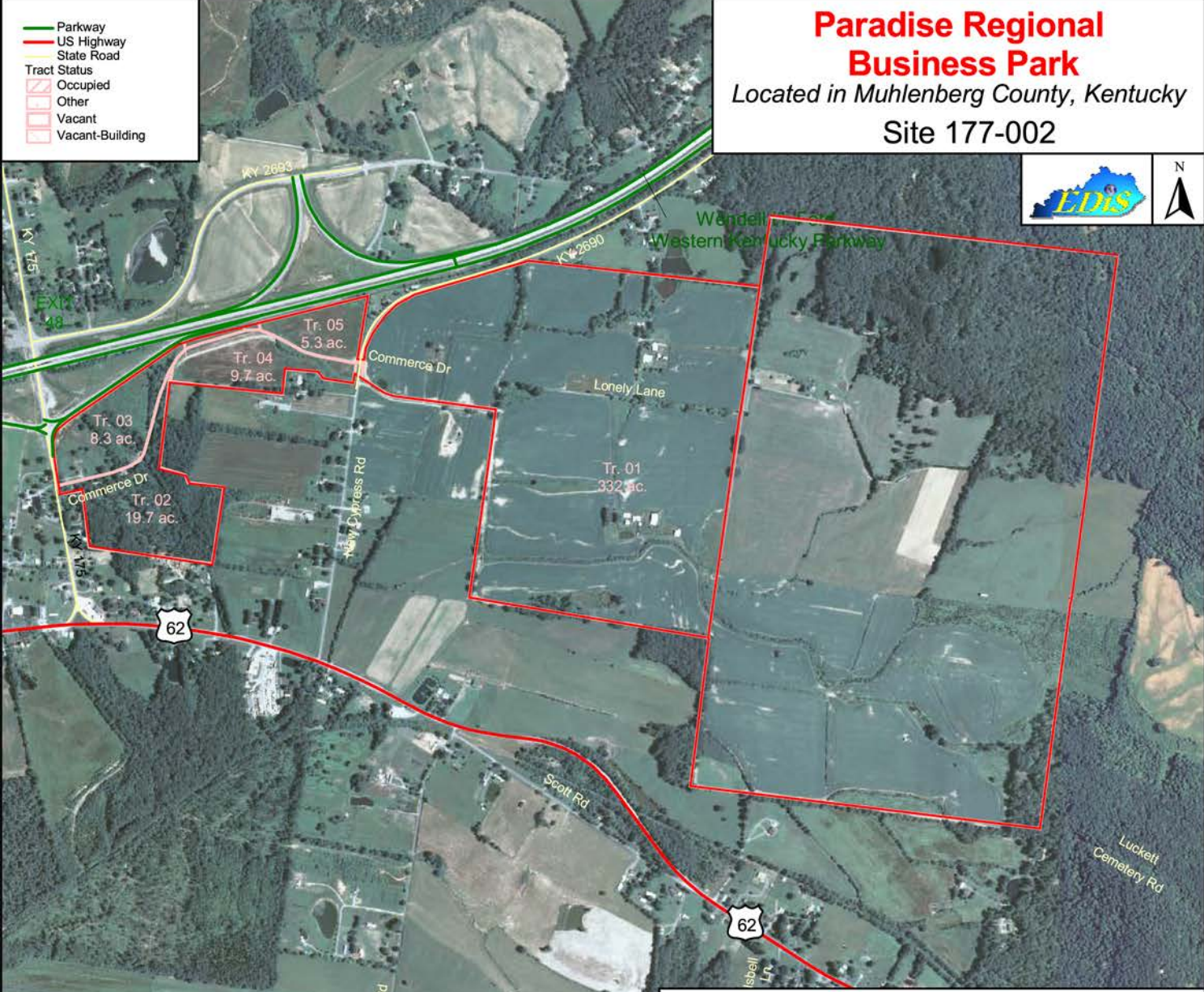


- Parkway
- US Highway
- State Road
- Tract Status
- Occupied
- Other
- Vacant
- Vacant-Building

Paradise Regional Business Park

Located in Muhlenberg County, Kentucky
Site 177-002



Paradise Regional Business Park
375.0 Acres/151.9 Hectares

LOCATION: Approximately 3 miles west of the Greenville city limits

ZONING: Not Zoned, protective covenants apply

HIGHWAY ACCESS: Wendell H. Ford/Western Kentucky Parkway interchange adjacent to site via Commerce Drive.

COMMERCIAL AIR ACCESS: Nashville International Airport
Distance: 89 miles southeast of Greenville

RAIL: Not rail served

WATER: Muhlenberg County Water District
Size Line: 6-inch line 2,500 feet south of site along US 62;
3-inch line 1,500 feet west side of New Cypress Rd.

SEWER: Greenville Utilities Commission
Size Line: 8-inch force main line serves the site

NATURAL GAS: Presently not available

ELECTRICITY: Kentucky Utilities (a PPL company)

BROADBAND (Type:Service): Cable: Comcast Cable; DSL: AT&T

FLOOD DATA: Portion of site is in 100-year flood plain

OWNERSHIP: Paradise Park Regional Industrial Authority (See NOTE below)

SCHOOL DISTRICT: Muhlenberg County Schools

PRICE PER ACRE: \$14,000 - \$25,000

NOTE: Physically in Muhlenberg Co., but governed by multi-county authority of Daviess, Hopkins McLean, Muhlenberg, and Ohio counties.

